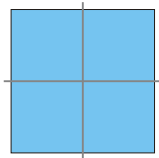
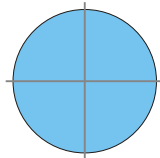
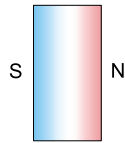


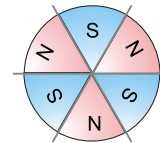
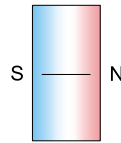
充磁方向 Directions of Magnetization



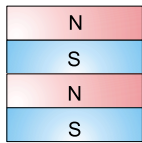
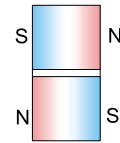
厚度方向充磁
oriented through thickness



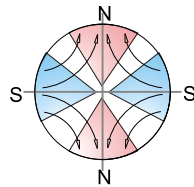
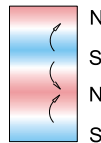
轴向充磁
axially oriented



轴向多极充磁
axially oriented

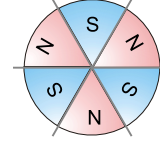
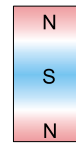


表面多极充磁
oriented laterally multipole
on one face

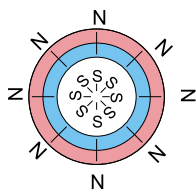
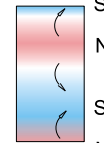


外圆多极充磁

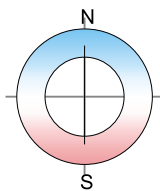
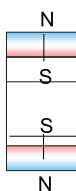
multipole oriented in segments on outside diameter



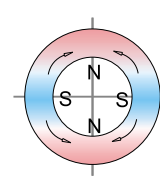
表面多极充磁



内圆辐射充磁
radially oriented

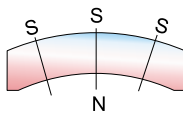
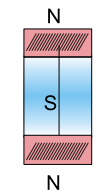


径向充磁
oriented through diameter

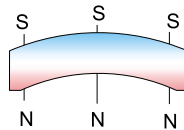
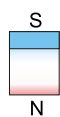


内圆多极充磁

multipole oriented in segments on inside diameter



辐射充磁
radially oriented



径向充磁
diametrical oriented

